

Next Register™ (NR4)



An Intelligent Integration Solution

The Next Register is a universal and fully programmable register that can be retrofitted on most water meters in use today. Through precisely reading the magnetic signature within existing mechanical meters the Next Register converts a traditional system into a smart, plug-n-play solution without the need to remove the existing meters.

With the Next Register, utilities can now easily benefit from flexible connectivity and data communications. The interoperable encoded output, BLE powered walk-by/drive-by, and built in RF capability allow the Next Register to tie directly into an existing AMI solution or start with a basic AMR system and scale over time.

The powerful and intuitive mobile application allows you to both program as well as collect reads from the Next Register without the need of additional costly equipment. This facilitates utilities to both reduce expenses while increasing the efficiency of daily operations.

Key Benefits

- Broad compatibility with existing meters and infrastructure
- Accuracy that doesn't fade over time
- Retrofittable on existing meters

Options for Growth

- Encoded output for seamless integration with existing AMR/AMI systems
- Walk-by, drive-by, and fixed network solutions

Built to Last

- Fully electronic with no moving parts that wear out
- Field replaceable 15-year battery
- Exceeds IP68 requirements

Configure with Ease

- Direct configure using any modern iOS or Android device
- Enable backflow, leak, and freeze alerts



GENERAL SPECIFICATIONS

Approvals

Complies with part 15 of the FCC rules
Certified National Type Evaluation Program (NTEP)

Wireless

Built-in BLE communication for configuration and walk-by reading option.

Integrated long range 902-928 MHz RF option for drive by and fixed network read collection options.

Meter Compatibility

Pairs with most modern mechanical meter body types including positive displacement (PD), multi-jet (MJ), and turbine.

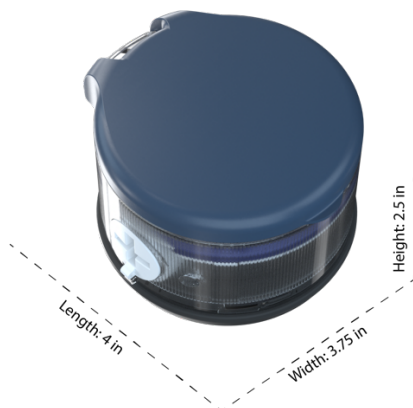
Integration adapter and seal included to ordering specification. Ask your distributor for details.

Battery

Anti-obsolescence: battery replaced instead of discarding
CR18505 lithium primary battery
15-year estimated battery life*

**Estimated battery life based on stable environmental conditions and default configuration. Actual battery life may exceed or be less than the 15-year estimate.*

Reference Dimensions



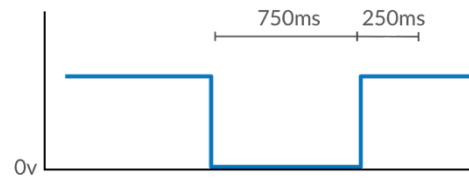
Operating Environment

IP 68 for submersed applications
Temperature min -20°C / -4°F
Temperature max 60°C / 140°F

OUTPUTS FOR 3RD PARTY INTEGRATIONS

Pulse Output

Clean solid state driven 750ms pulse output open-drain signal. Min 3vdc / Max 15vdc.



Pulse output signal diagram

Encoded Output

Wired encoded output can be used with any 3rd party transmitters* or reading devices that support the encoded protocols listed below.

- Neptune (8 digit extended)
- AMCO/Elster k-frame
- Sensus 3-wire / 2-wire touchpad

**Some 3rd Party transmitters may not actively relay optional alerts. Alerts are still logged and can be retrieved with direct reading.*

NEXT REGISTER™ AMR/AMI OPTIONS

Walk-by Wireless Reading

Authorized meter readers to collect near-proximity wireless reads using the Next Meters mobile app.

Drive-by Wireless Reading

The Next Meters mobile app facilitates easy read collection when paired with the range-extending antenna in any vehicle.

Municipal Fixed Wireless

A continuous stream of usage data is made available with the fixed wireless solution. Solar powered network nodes are added to service large zones of a city or region.

Submetering Fixed Wireless

The NCCS™ fixed wireless option allows integration with the NextCentury submetering line of products for indoor monitoring of dense meter points found in apartments, high-rises, and commercial units.

CONFIGURATION

Direct Connection to Register

Using the Next Meters mobile app available for iOS or Android, a technician can directly connect to the register to configure the output type, billing digits, and unit of measure.

How To Enter Configuration Mode

Open the Next Meters mobile app on your device
 Navigate to the Connect tool
 Swipe a magnet past the activation zone on the register
 The register will appear on the screen and can be selected
 The current configuration will display with the option to customize as needed



Magnet swipe area on the face of the register

Applying Changes

After desired configuration changes, select Save
 The app will prompt you to swipe the magnet again
 Swiping the magnet will apply the changes and return the register to an active status ready for use

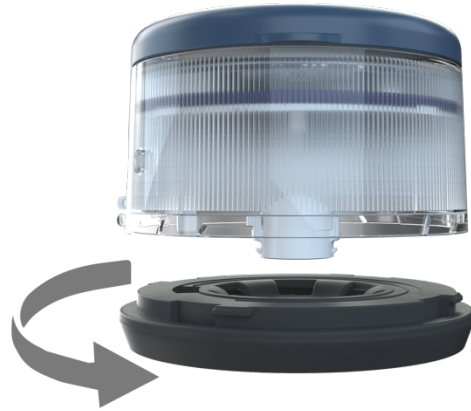
MOUNTING THE NEXT REGISTER™

Retrofit Adapter Plates

Retrofit adapter plates are available for most meter body styles. The adapter type can be specified when ordering and can be changed at any time during the Next Register's lifespan. Please contact your distributor for more information.

Attaching the Adapter Plate

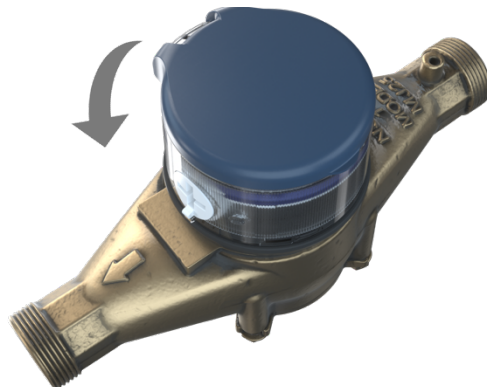
To install the register, simply thread the adapter ring onto the bottom of the register. The two parts will click into place when secure.



Attaching adapter plate to the register

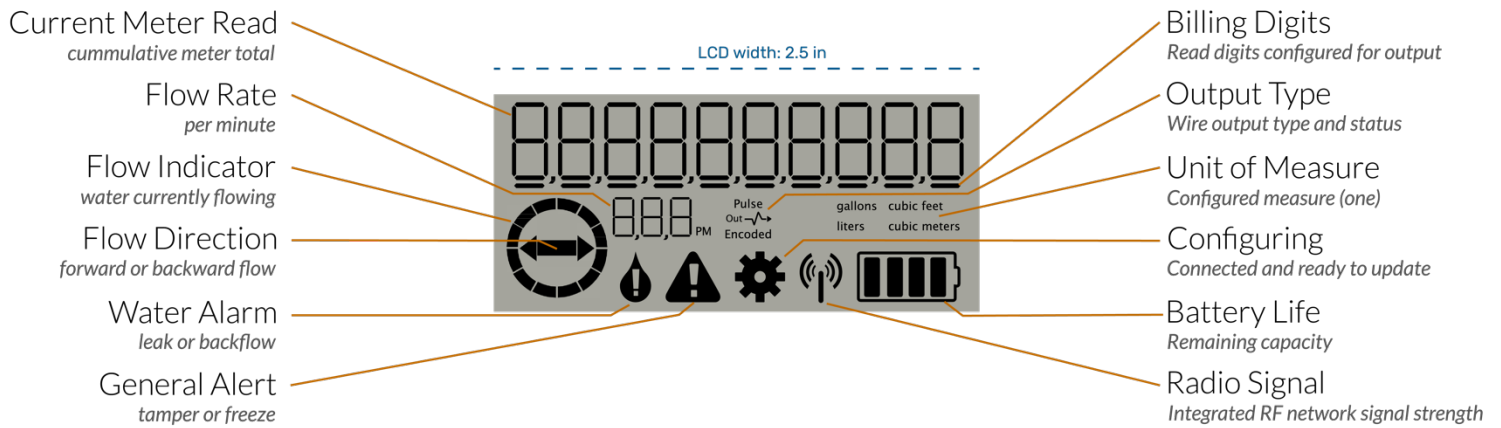
Mounting to Meter Body

Orient the register to the desired viewing angle
 Set the register into the meter body mounting bracket
 Rotate clockwise approximately 1/8th turn
 Verify the LCD is facing the desired direction
 Insert the security pin into the adapter plate
 Press in until flush and secure



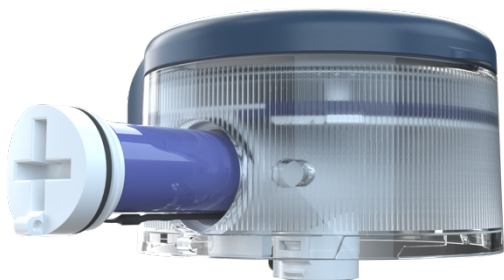
Attaching register to the meter with 1/8 turn

LCD DISPLAY



BATTERY REPLACEMENT

- Battery cap can be removed with a large screwdriver
- Rotate counterclockwise to remove the battery cap
- Pull the battery from the compartment
- Disconnect the battery connector
- Connect new battery
- Place battery back into compartment
- Replace the battery cap, and rotate clockwise until alignment arrows meet



CONTACT INFORMATION

Next Meters, LLC
 info@nextmeters.com
 www.nextmeters.com